





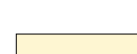

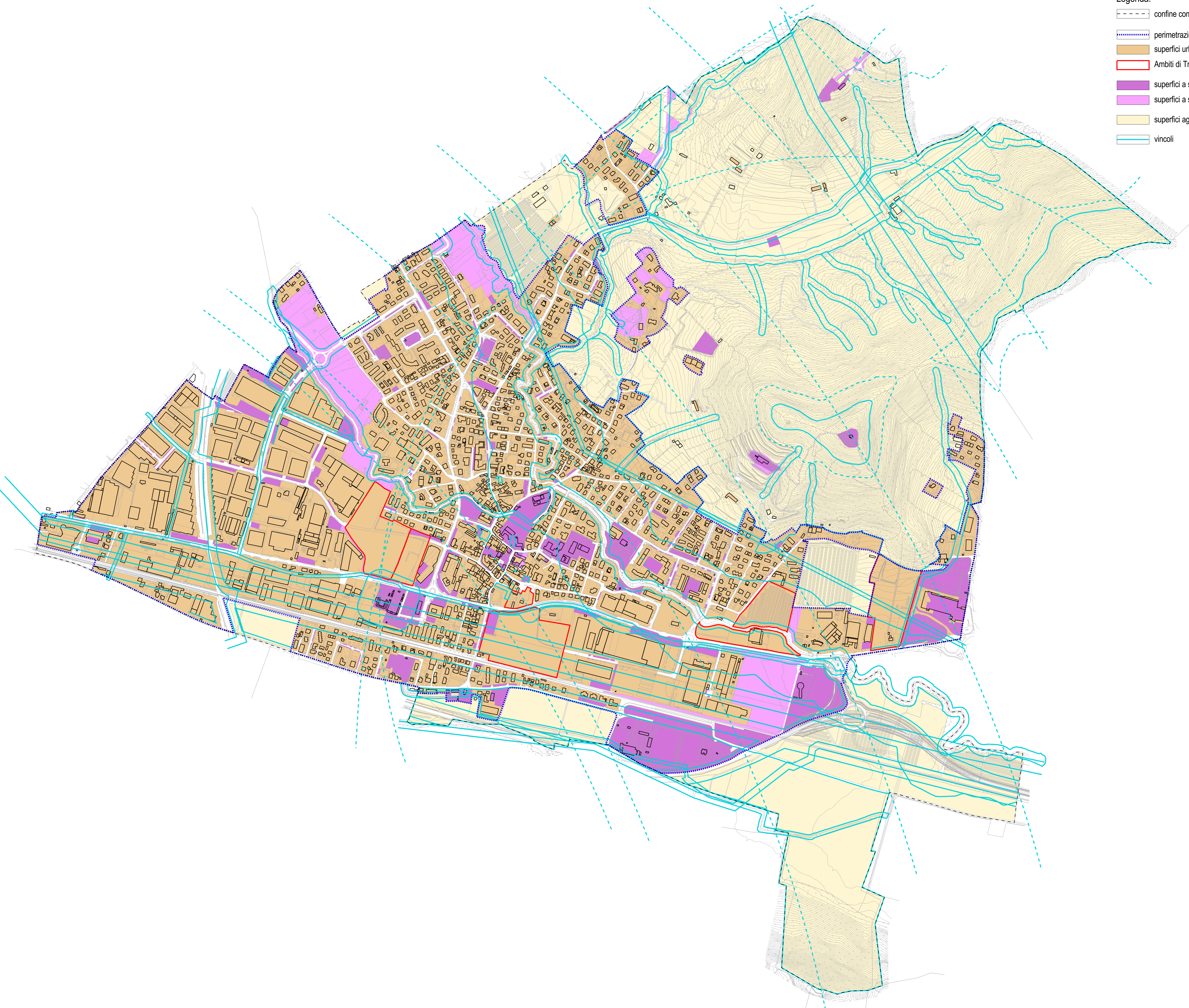


- Legenda:
-  confine comunale
  -  perimetrazione T.U.C. (Tessuto Urbano Consolidato)
  -  superfici urbanizzate
  -  Ambiti di Trasformazione
  -  superfici a standard esistenti
  -  superfici a standard di progetto
  -  superfici agricole
  -  vincoli



ALBANO SANT'ALESSANDRO  
VARIANTE 01

PGT PIANO DI GOVERNO DEL TERRITORIO

comune di  
**ALBANO SANT'ALESSANDRO**  
provincia di  
**BERGAMO**

**VARIANTE 01**  
PIANO DI GOVERNO DEL TERRITORIO P.G.T.  
DOCUMENTO di PIANO

**R 3.8**  
tavola  
Raffronto PGT var01 - PTCP  
Tavola di classificazione  
delle superfici:  
urbanizzate, standard,  
agricole e vincolate

data  
gennaio 2017  
scala  
1:5.000  
Rit.

progettisti  
arch. Marco Minelli  
arch. Matteo Riva  
V.A.S.  
arch. Gianluca Della Mea